
MI5 CreateInclinFile.exe Quick Start Guide

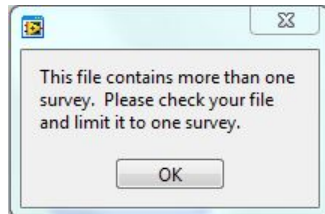
V1.1 Beth Novak

Introduction

This guide will help technicians use the *CreateInclinFile.exe* program. The purpose of the program is to combine the recovered .txt data file with the .raw tool calibration data and to format them into a file that can be opened using *Inclin*. *CreateInclinFile.exe* searches the .txt file for the tool name and automatically selects the appropriate calibration information. While the program is running, the user is prompted to enter their user name. The user name is inserted into the final file.

Procedure

1. Open *CreateInclinFile.exe*.
2. When prompted, select a .txt file.
3. Select the .txt file that corresponds to the survey you wish to process and select **OK**. If the user receives the message shown below, the .txt file contains more than one survey.
 - This occurs when the tool and the Palm are not cleared prior to starting another survey. It may also occur if recovered data have not been hotsync'd to that particular computer previously.
 - The program will end. User should open .txt file and create a .txt file that only contains the pertinent survey, then relaunch *CreateInclinFile.exe*.



4. The Prompt User window will appear. Enter the operator name into the header of the .raw file in order to maintain a record of who edited the file.
5. Select **OK**.
6. In the Name New File window enter the filename including the .raw extension and chose a folder to save the file into.
 - Suggested convention for the new file name is: SiteHoleEdited.raw (e.g., U1440Aedited.raw).
7. Select **OK**.
8. A dialog window will appear stating "Inclin File has been created."
9. Select **OK**.
10. Program will end.
11. User may now open the edited .raw file in *Inclin*.